

COMPANY PROFILE

ELECTRICAL | ELECTRONICS/SMART HOME SOLUTIONS | CCTV | FIRE ALARM
FM 200/NOVEC 1230 GAS/DELUGE SYSTEM | LAN/WAN NETWORKING | SECURITY SYSTEMS | PABX/INTERCOM
HOTEL LOCKS | ACCESS CONTROL SYSTEM | ELECTRIC FENCE SYSTEM



INTRODUCTION

JOYiTEK Systems Integrator is an Electrical, Electronics, and Computer Engineering company incorporated under the Corporate Affairs Commission of the Federal Republic of Nigeria. We specialize in providing comprehensive solutions and services in Electrical, Extra Low Voltage, and Computer systems. Our expertise spans across the design, supply, deployment, installation, and maintenance of various equipment.

At **JOYiTEK** Systems Integrator, we are committed to delivering high-quality solutions tailored to meet the unique needs of our clients. Our team of experienced professionals ensures that every project is executed with precision and excellence.

OUR MISSION & VISION

At JOYiTEK Systems Integrator, our mission is to provide innovative, reliable, and cost-effective solutions in Electrical, Electronics, and Computer systems. We strive to exceed our clients' expectations through exceptional service, cutting-edge technology, and a commitment to excellence. Our goal is to empower businesses and individuals by integrating advanced systems that enhance security, efficiency, and connectivity.



Our vision is to be a leading provider of Electrical, Electronics, and Computer systems solutions in Nigeria and beyond. We aim to set industry standards through innovation, exceptional service, and excellence, seamlessly integrating our solutions into everyday life to enhance safety, productivity, and connectivity.

OUR TEAM

Our team of engineers is highly experienced with professional training in Electrical, Electronic Security and Communication, System Design, Integration/Implementation, and Project Management. At JOYiTEK Systems Integrator, we are committed to delivering high-quality solutions tailored to meet the unique needs of our clients. Our team ensures that every project is executed with precision and excellence.



OUR SERVICES

Our service offerings include:

- **ELV AutoCAD Design**
 - Specialized design services for Extra Low Voltage systems using AutoCAD.
- **Smart Home Solutions**
 - Comprehensive automation and control systems for modern homes.
- **Access Control Systems**
 - Turnstile systems
 - Armored and aluminum doors
- **Visitor Management, Time & Attendance Systems**
 - Efficient systems for managing visitors and employee attendance.
- **Automated Door Systems**
 - Revolving doors
 - Hospital doors
 - Swing doors
- **Automated Gates, Shutters & Barriers**
 - Solutions for secure and automated entry points.
- **Hotel Door Locks**
 - Advanced locking systems for hospitality establishments.
- **Public Address and Background Music Systems**
 - High-quality audio systems for public announcements and ambient music.
- **Closed Circuit Television (CCTV) Systems**
 - IP, wired, and wireless surveillance solutions.
- **Fire Detection & Alarm Systems**
 - Comprehensive fire safety solutions.
 - Fire Suppression systems



OUR SERVICES

- **PABX/Intercom Systems**
 - Efficient internal communication systems.
- **Video Door Entry Systems**
 - Secure and convenient door entry solutions.
- **Automatic Fire Suppression Systems (FM 200)**
 - Advanced fire suppression systems for critical environments.
- **Integrated Security Systems**
 - Intruder/security alarms
 - Power/electric fences
 - Car trackers
- **CATV and Satellite TV Distribution Systems**
 - DSTV, Free to Air, and other satellite TV distribution solutions.
 - TV networking
- **Structured Cabling for Video, Voice, and Data Networks**
 - Reliable infrastructure for modern communication needs.
- **Structural Cabling**
 - Design and installation of cabling systems for various applications including data centers, offices, and industrial environments.
- **Sales and Supply of IT Equipment**
 - Brand new and used laptops
 - Desktop computers
 - Computer tablets
 - Smartphones



OUR SERVICES

PABX SYSTEM

The PABX system comprises of a private branch exchange (PABX) equipment and several telephone handsets (extensions) connected together through it. The PABX system is used for internal or external (in the case of an IP based) communication by private organization such as offices, hotels and private residence. There are varieties of PABX and their sizes are determined by the number of extensions required to be connected to it and also the number of public lines to be connected as well.



PABX & Telephone sets

Features of the PABX System:

- Facilitates communication within the building e.g. Main house to the security post and vice versa.
- Can be configured to restrict and/or minimize abuse of public Telephone access.
- Can be configured to log call detailed records of call made via the PABX by every user by assigning unique access code to each use to enter before making external calls
- Can be integrated with an interactive voice response system, auto-attendant and background music on hold to all external calls offering some preprogrammed message for external callers requesting information/enquiries on services offered by your outfit
- In the case of an IP – PBX, it can be connected via the internet and/office WAN if available to enable communication with other branches, reducing cost on making calls to the branches through public telephone networks such as GSM etc.



OUR SERVICES

FIRE ALARM SYSTEM

This system is made up of an addressable or conventional fire control panel, Smoke detectors, Electronic Bell or Sounders/Strobe and

Manual call point or Break glass. The smoke detectors will be installed in every office/rooms and other locations considered being of high risk. Manual call points (to raise an alarm manually by breaking the glass) will be located at entry/exit points in strategic areas within the building where it can be easily accessed during a fire outbreak or evacuation. Sounders are also installed in central locations within the building for uniform audibility. The Emergency exit doors with electronic lock can be integrated into the fire alarm panel for automatic door release for easy evacuation during fire outbreak.



Break Glass or
Manual Call point



Fire Alarm Panel



Electronic sounder



Smoke Detector

Features:

- Detection and alert any time there is a fire outbreak
- Reduces the risk of loss of lives and damage to properties from fire accident
- The fire alarm panel (Addressable system) will tell the exact location where the fire/smoke is detected within the building.
- The system keeps history of fire events for future reference. Starcomm, GSM etc.

OUR SERVICES

CIRCUIT TELEVISION (CCTV) SYSTEM

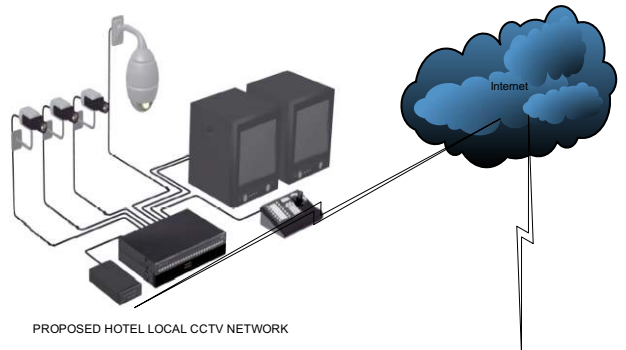
The CCTV system comprises of various types of surveillance camera such as discrete, standard and domes connected to control equipments such as switchers, splitters, multiplexers, Digital Video Recorders(DVR) and Network Video Recorder(NVR). All connected cameras are monitored on standard CCTV monitors or from a remote location in the case of an IP based system.



Wall Mount Outdoor Camera



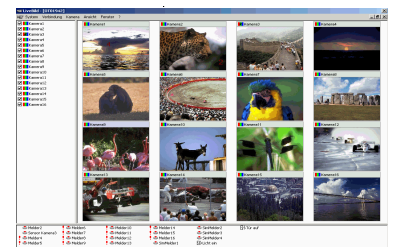
Indoor Dome Camera



Speed Dome /PTZ Cameras



Spy Cameras



Remote Monitoring Station from anywhere in the world

Features:

- Cameras can be installed in strategic locations within and outside the building for proper coverage to monitor and record activities
- Secret cameras can be installed in every floor and strategic places to monitor and record activities without staff / intruder being aware that they are being watched
- Recorded activities can be archived and reviewed whenever required
- Recorded activities can be used by security personnel to investigate theft and other incidents
- Cameras can be installed to cover perimeter areas like car park etc.
- Monitoring of activities from a remote location via the internet from anywhere in the world
- System can be configured to record and store pictures whenever motion is detected.



OUR SERVICES

HOTEL DOOR LOCK SYSTEM AND ENERGY SAVING UNIT

The electronic door lock system offers well managed access and proper billing for each guest room based on room number, check-in and check-out date time stored in each lock memory. Access to guest room is denied after the programmed check out time expires.

The energy saving unit is used to manage the energy consumption in each guest room, it needs an access card to illuminate and power the appliances in the room and when the card is removed it cuts electrical power supply to the room after a few seconds. The energy saving unit controls and manages the power supply consumed by electrical appliances such as water heater, air conditioner etc.



Features:

- Accurate billing of guest by granting access to guest for only the duration paid for.
- Proper logging of activities on each guest room through information stored by the lock.
- Reservation and checking in of guest can be done from a central computer.
- Can be used to track and/or reduce fraud.
- It will act as a guest second access key to their rooms.
- The lock can be installed in an already existing hotel
- The energy saving unit will reduce energy consumption in each guest room by allowing electrical supply to appliances only when guest are in their rooms.
- The energy saving unit acts as a protection device



OUR SERVICES

LOCAL AREA NETWORK (LAN)

The Local Area Network comprises of Cat 5e or Cat 6 cables running from different locations (offices/rooms) in a building to terminate at a central point, connected to an Ethernet switch or Hub for Computer communication.

WIDE AREA NETWORK (WAN)

This type of network comprises of Network switches, Routers, microwave radio e.t.c to enhance a network link and it covers a wide area e.g. offices at different locations so they can share / receive documents and data from remote offices via the network and also use a central server.

Internet access connectivity comprises of deploying a link either VSAT or a radio link to the internet. This will enable your facility enjoy the benefit of accessing the internet and offer internet services such as online accommodation reservations-payments and other online transactions (In the case of a Hotel).



Data Cables terminated on Ethernet Switch



Data & Voice Faceplate

Features:

- The local Area Network enables computers connected on a LAN share documents, printers etc via the Network
- Communication is made easy to a remote (different location) office via a wide Area Network (WAN).

OUR SERVICES

INTRUDER ALARM SYSTEM

This system guards against illegal intrusion into a premise. The intruder alarm system comprises of Burglar Alarm panel, motion sensitive accessories like: door/window contact, vibrator sensor, motion detectors, beam detectors, panic buttons, Keypads etc. all the accessories listed above provides precise protection against intrusion into the premises.



Burglar Alarm Panel & Accessories



Strobe light & Siren



Motion Detectors

Features:

- The System alerts you of unauthorized entry to your premises or restricted areas.
- The system can trigger a silent alarm to an undisclosed location.
- The system can send an alert (SMS or Voice messages) to Pre-programmed telephone numbers.
- The system serves as a panic alarm

OUR SERVICES

ACCESS CONTROL SYSTEM (Visitors management, Time and Attendance.)

Access Control System is for monitoring and controlling entry to rooms, offices, apartment and buildings. Because keys are easily duplicated, these systems are the best means of controlling and monitoring who enters where and when and also to control unauthorized entry.

The Access control system comprises of different access control units/Readers and other accessories to make a complete system. The complete unit comprises of Access control panel, Electromagnetic lock (which needs 12 Vdc to hold in the case of a failsafe and 12 Vdc to release in the case of a fail secure), The reading unit is either Pin Reader, Pin & Proximity Card Reader, Proximity Card Reader & Biometric (Finger print) Reader.



Proximity reader



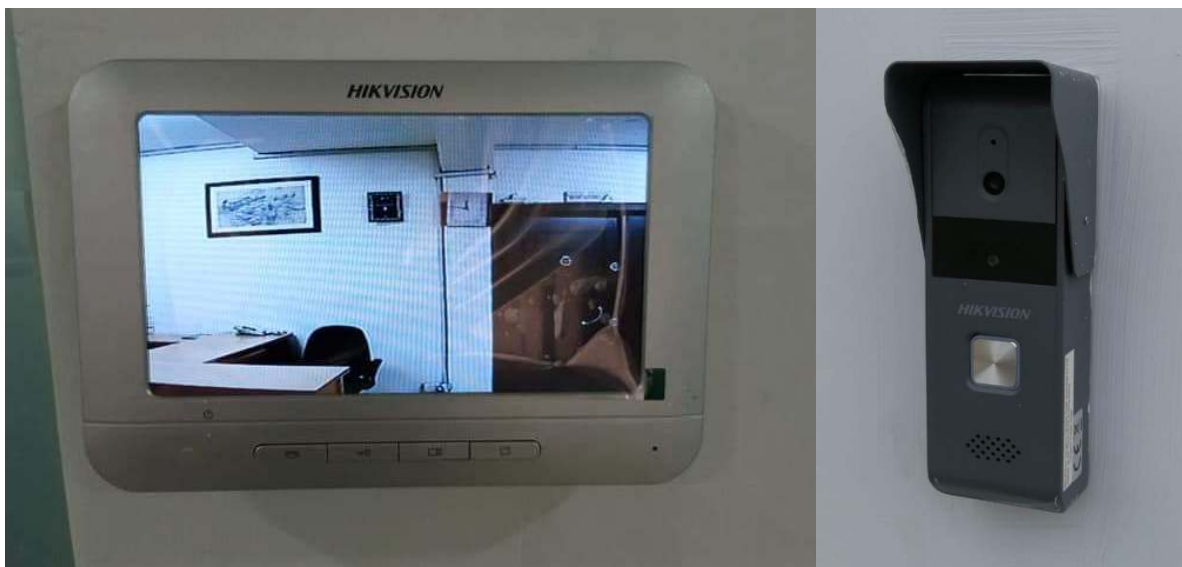
Features:

- The Access control system restricts unauthorized persons from gaining access to access controlled areas, e.g. server rooms, Senior personnel's office, sensitive areas in an office etc.
- It can be used for time and attendance purpose (in the case of IP based readers)
- The system stores history/log of entries and exit made at each access controlled door.
- Alerts security personnel when an access controlled door is left opened for longer than pre-programmed time.

OUR SERVICES

VIDEO DOOR ENTRY SYSTEM

This system provides video and voice communication between the visitor and the resident, it comprises of entrance door panel(which has an inbuilt camera and speaker) and the indoor video/audio system that helps you communicate and see video of images around your entrance. The system that cater for small and luxury apartments and multiple indoor system can be integrated to suite the client design.



Video Door Entry

Features:




- Communication/security made easy.
- Helps to identify/screen visitors before access is granted.
- You can unlock main entrance doors from the comfort of your apartment if electronic locking devices is incorporated to the video door entry system.
- The system keeps log of visitors in your absence.

OUR EXPERIENCE

S/No	TYPE OF INSTALLATION	CLIENT/PROJECT	YEAR
1.	Fire Detection and Alarm System	OCP Africa Ltd / Almog Engineering Ltd	2021 - 2023
2.	Novec 1230 Gas/Fire Suppression	OCP Africa Ltd / Almog Engineering Ltd	2021 - 2023
3.	ELV Services	Florence Apartment, Lekki. Lenox and Blair Estate Ltd. Lagos.	2021 - 2023
4.	ELV Services	Allamanda Terrace Ikoyi Lagos. Lenox and Blair Estate Ltd.	2021 - 2023
5.	ELV Services	Nest Apartment Behind Vintano Hotel	
6.	CCTV Installation	Mr Raymond Project	2022 - 2024
7.	Fire Alarm System	Bishop House for Catholic Church Osapa London Lekki, Lagos.	2023
8.	ELV Services	Amen Global Project, Banana Island, Lagos. Almog Nig Ltd.	2023 -2024
9.	Data and Voice Networking, TV Networking, CCTV, Conference Room ELV .	Cedar Crest Hospital, Lagos. Almog Nig Ltd.	2023 - 2024
10.	Profession TV Installer and Maintenance	Depasa Marine Ltd. Naval Dockyard, Apapa, Lagos.	2009 - 2024

CONTACT US



-  Plot 13, Block 13 Rasak Bello Street,
Magodo Phase 1 Lagos
-  08037974835, 08063894434, 07018737338
-  ayomipojoshua@gmail.com,
joyiteksystems@gmail.com